

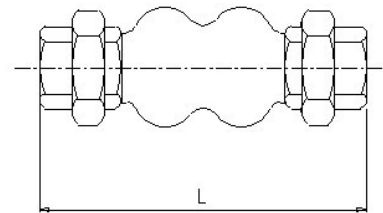
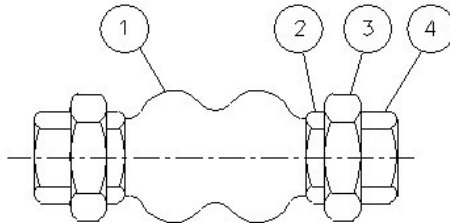
ARTICULO: 2830
Junta de expansión de EPDM extremos roscados.
Rubber Expansion Joint, Threaded ends.

Características

1. Junta de expansión.
2. Cuerpo de EPDM, Extremos acero carbono.
3. Extremos roscados según DIN 2999 Std..
4. Presión de trabajo máxima 10 Kg / cm².
5. Temperatura de Trabajo – 10 °C + 105 °C.

Features

1. *Expansion Joint.*
2. *Body made of EPDM, Ends of carbon steel..*
3. *Threaded ends according DIN 2999 Std.*
4. *Max. Working pressure 10 Kg / cm².*
5. *Working temperature – 10 °C + 105 °C.*

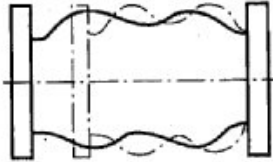


Nº	Denominación/Name	Material	Acabado Superficial/Surface Treatment
1	Cuerpo / Body	EPDM	-----
2	Brida / Clamp	Acero Carbono / Carbon steel	Cincado / Zinc plated.
3	Unión / Union	Acero Carbono / Carbon steel	Cincado / Zinc plated.
4	Racor / Racord	Acero Carbono / Carbon steel	Cincado / Zinc plated.

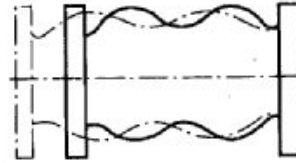
DIMENSIONES GENERALES / GENERAL DIMENSIONS

Ref	Medida/Size	PN	Dimensiones/Dimensions (mm) L	Peso/Weight (Kg)
2830 05	3/4"	10	200	0.71
2830 06	1"	10	200	1.09
2830 07	1 1/4"	10	200	1.31
2830 08	1 1/2"	10	200	1.78
2830 09	2"	10	200	2.65

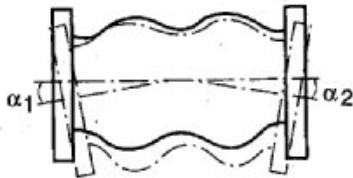
Diagrama de desplazamientos / Diagram of Displacement



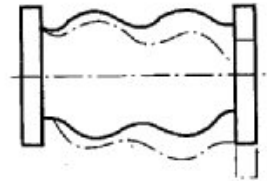
Compresión axial / Axial compression



Elongación axial / Axial stretch



Deflexión angular / Angular deflection



Desplazamiento lateral / lateral displacement

Ref	Compresión axial / Axial compression	Elongación axial / Axial stretch	Deflexión angular / Angular deflection	Despl. Lateral / Lateral disp.
	mm.	mm.	$\alpha_1 + \alpha_2$	mm.
283005	22	5	25°	22
283006	22	5	25°	22
283007	22	5	20°	22
283008	22	5	15°	22
283009	22	5	12°	22